

FLINT, MICHIGAN

AL-618 (FAA)

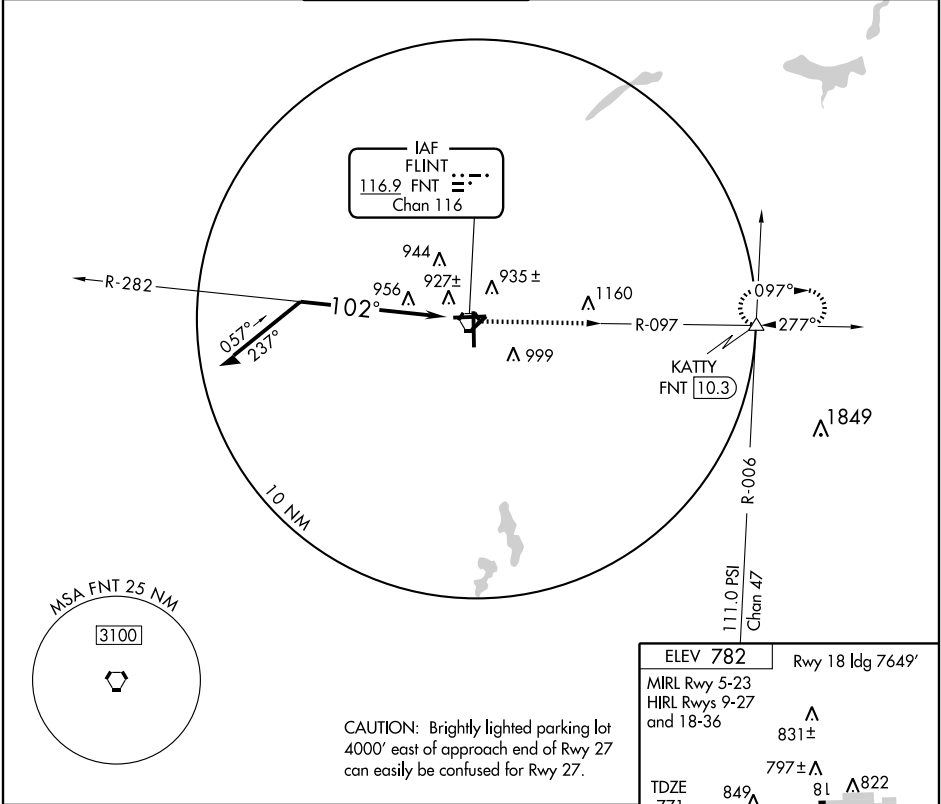
# VOR RWY 9

FLINT / BISHOP INTL (FNT)

VORTAC FNT <b>116.9</b> Chan <b>116</b>	APP CRS <b>102°</b>	Rwy ldg <b>7201</b> TDZE <b>771</b> Apt Elev <b>782</b>
---	------------------------	---

ASR	MALSR	MISSED APPROACH: Climb to 3000 via FNT R-097 to KATTY Int/FNT 10.3 DME and hold.
-----	-------	--

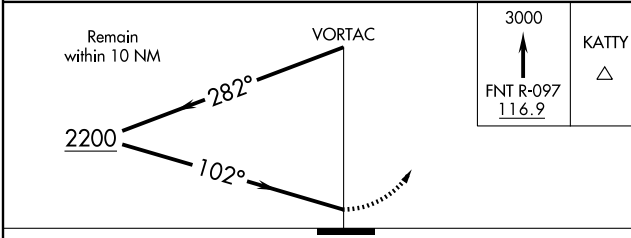
ATIS <b>133.15</b>	FLINT APP CON ★ <b>118.8 257.9</b>	FLINT TOWER ★ <b>126.3 (CTAF) 257.9</b>	GND CON <b>121.9</b>	CLNC DEL <b>121.75</b>	UNICOM <b>122.95</b>
-----------------------	---------------------------------------	--	-------------------------	---------------------------	-------------------------



EC-1, 13 MAR 2008 to 10 APR 2008

EC-1, 13 MAR 2008 to 10 APR 2008

CAUTION: Brightly lighted parking lot 4000' east of approach end of Rwy 27 can easily be confused for Rwy 27.



ELEV 782	Rwy 18 ldg 7649'
MIRL Rwy 5-23	
HIRL Rwy 9-27 and 18-36	
TDZE 771	
849 Δ	797± Δ
81 Δ	822 Δ
799 Δ	7201 X 150
884	3923 X 150
	7849 X 150
	0.4% Up
102° to FNT VORTAC	
856±	
821±	36
	★

Knots	60	90	120	150	180
Min:Sec					

CATEGORY	A	B	C	D
S-9	1300/24 529 (500-½)		1300/50 529 (600-1)	1300/60 529 (600-¼)
CIRCLING	1300-1 518 (600-1)		1300-1½ 518 (600-1½)	1340-2 558 (600-2)

FLINT, MICHIGAN  
Orig 07130

42°58'N - 83°45'W

# FLINT / BISHOP INTL (FNT) VOR RWY 9